



## Alpha-Stim® Order for Use

**Alpha-Stim® SCS**

*Select One*

**Alpha-Stim® 100**

FDA-Cleared Medical Device  
Utilizing Cranial Electrotherapy  
Stimulation to Treat Depression,  
Anxiety, and Insomnia.

Check to Order

\$495

FDA-Cleared Medical Device  
Utilizing Microcurrent  
Technology to Treat Pain, and  
Cranial Electrotherapy  
Stimulation to Treat Depression,  
Anxiety, and Insomnia.

\$895

Check to Order

### *Patient*

Name \_\_\_\_\_

Address \_\_\_\_\_

City \_\_\_\_\_ State \_\_\_\_\_

Zip \_\_\_\_\_ Phone \_\_\_\_\_

Fax \_\_\_\_\_

Email \_\_\_\_\_

Date of Order \_\_\_\_\_

Patients please read our trial policy  
and sign below it.

### *Practitioner*

Name \_\_\_\_\_

Address \_\_\_\_\_

City \_\_\_\_\_ State \_\_\_\_\_

Zip \_\_\_\_\_ Phone \_\_\_\_\_

Fax \_\_\_\_\_

Email \_\_\_\_\_

Diagnosis \_\_\_\_\_

ICD9 Code(s) \_\_\_\_\_

Dispense as ordered above

Signature \_\_\_\_\_

### Our 30-Day Trial Period

We at Moeller Medical put the patient first. We have no desire for you to keep any unit if it happens to not be efficacious for you. We allow patients a full 30 days from the time of receipt of the device (not from date of order) since some patients may not start experiencing results until 3 to 3 ½ weeks of daily treatment. Just return the device in its original saleable condition (including box and manual) to receive a refund of the purchase price minus our 15% trial fee. Shipping costs are not refundable. Please sign here to acknowledge understanding of our return policy \_\_\_\_\_

When complete you may fax this form to 1-866-278-2664 or email it to [support@moellermedical.net](mailto:support@moellermedical.net) For questions or research on Alpha-Stim products please visit [www.depressiontreatmentnow.com](http://www.depressiontreatmentnow.com) or [www.chronicpainreliefnow.com](http://www.chronicpainreliefnow.com). You may also call us at 1-888-378-4685 or 1-513-297-4975.



**Moeller Medical, LLC**



## What is Alpha-Stim® Cranial Electrotherapy Stimulation (CES)?

---

Cranial Electrotherapy Stimulation (CES) is a safe, non-drug approach to treat depression, anxiety, and insomnia. Like many drugs, its exact mechanisms are not known. Its tiny “microcurrents” are thought to stimulate the areas of the brain responsible for neurotransmitter and hormone production. Clinical tests appear to back this up. Increases in cerebrospinal fluid level beta-endorphins up to 219%, plasma beta-endorphins up to 98%, and cerebrospinal fluid serotonin up to 200% have been demonstrated in normal volunteers receiving just 20 minutes of CES treatment. In addition, many patients report a feeling of slight to moderate euphoria after use.

### Cranial Electrotherapy Stimulation FAQs:

1. Is it safe? - Yes. Electricity is perfectly safe at the level that Alpha-Stim® delivers<sup>1</sup>. Remember, we all have electrical currents flowing throughout our brain and body at all times. Alpha-Stim® uses tiny currents close to the amount that flows naturally in our systems.

2. Is it like shock therapy? - No, not at all. Shock therapy (or Electroconvulsive Therapy) uses an electric current that is 1000 to 1500 times greater than the Alpha-Stim®. We use current close to your body's own naturally occurring electrical current. To many patients the feeling is subsensational. Alpha-Stim® is an extremely safe treatment that unlike shock therapy has no major adverse effects ever reported<sup>1</sup>.

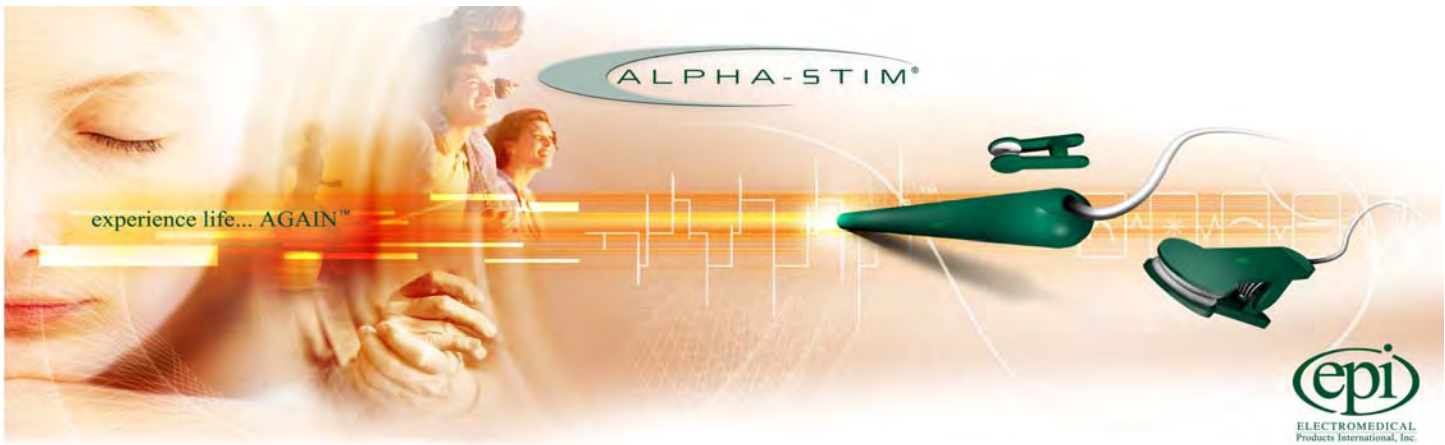
3. Will I feel better after the first use? - Maybe. Some patients that use the Alpha-Stim® report benefit after the first use. Keep in mind that it may take 1 to 3 weeks however for many people to begin to feel benefit however. It will depend on how you respond to the treatment.

4. What are the long term effects? - The amount of electricity used does not cause any known cell damage at all. Out of the estimated 15 million patients that have used the Alpha-Stim®, none have reported any long term negative effects<sup>1</sup>.

*Remember- the body needs electrons, the flow of electrons (electricity), and electrically charged particles to operate. Low levels of electricity are safe<sup>1</sup>.*

1. Please review prescribing information and FDA labeling for list of cautions and adverse effects.





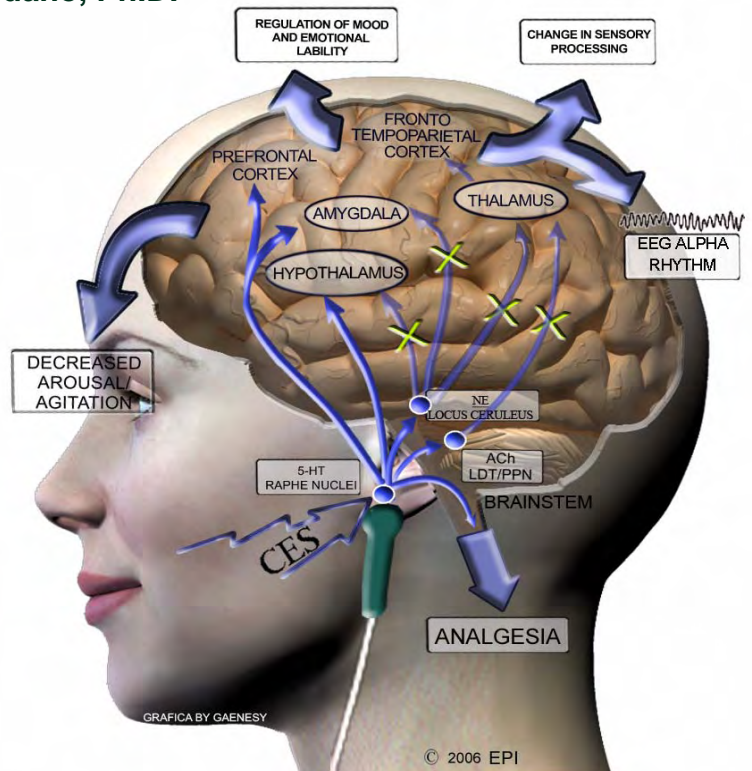
## How Alpha-Stim® Cranial Electrotherapy Stimulation (CES) Works

James Giordano, Ph.D.

How does Alpha-Stim cranial electrotherapy stimulation (CES) technology work? The exact mechanism by which Alpha-Stim produces effects is not fully known. However, based on previous and ongoing studies, it appears that the Alpha-Stim microcurrent waveform activates particular groups of nerve cells that are located at the brainstem. These groups of nerve cells produce the chemicals serotonin and acetylcholine which can affect the chemical activity of nerve cells that are both nearby and at more distant sites in the nervous system. In fact, these cells are situated to control the activity of nerve pathways that run up into the brain and that course down into the spinal cord. By changing the electrical and chemical activity of certain nerve cells in the brainstem, Alpha-Stim appears to amplify activity in some neurological systems, and diminish activity in others. This neurological 'fine tuning' is called modulation, and occurs either as a result of, or together with the production of a certain type of electrical activity pattern in the brain known as an alpha state which can be measured on brain wave recordings (called electroencephalograms, abbreviated EEG). Such alpha rhythms are accompanied by feelings of calmness, relaxation and increased mental focus. The neurological mechanisms that are occurring during the alpha state appear to decrease stress-effects, reduce agitation and stabilize mood, and regulate both sensations and perceptions of particular types of pain.

These effects can be produced after a single treatment, and repeated treatments have been shown to increase the relative strength and duration of these effects. In some cases, effects have been stable and permanent, suggesting that the electrical and chemical changes evoked by Alpha-Stim have led to a durable re-tuning back to normal function. Electromedical Products International, Inc. is dedicated to continued research into the mechanisms and effects through which Alpha-Stim can be beneficial to patients with pain, anxiety, depression and sleep disorders.

**James Giordano, Ph.D.** is a UNESCO Fellow and Scholar in Residence at the Center for Clinical Bioethics, Georgetown University Medical Center, Washington, DC. Dr. Giordano is also Visiting Scholar at the Center for Ethics, Dartmouth Medical School, Hanover, NH, and Invited Lecturer at the Roundtable in Arts and Sciences, Oxford University, UK. As a neuroscientist, Dr. Giordano's ongoing work is focused upon neural mechanisms of pain, the philosophy of pain research and practice of pain medicine, and the neuroethical issues inherent to the development and use of emergent technologies in neurology and psychiatry. Dr. Giordano received his Ph.D. in biological psychology from the City University of New York. He was a NIEHS post-doctoral fellow in neurotoxicology and neuroscience at The Johns Hopkins University, Baltimore, MD, served as Visiting Scientist in the Department of Clinical Neuropharmacology, Max Planck Institute for Psychiatry, Munich, Germany, was an American Psychological Association Visiting Fellow in neuroimaging at the Martinos Center for Advanced Imaging, Harvard University Medical School/Massachusetts General Hospital, and completed post-graduate training in bioethics at the Neiswanger Institute for Bioethics and Health Policy, Loyola University/Stritch Medical School, Chicago, IL. The author of over 65 refereed publications on pain, ethics and medical philosophy, Dr. Giordano serves as Neuroscience Section Editor for the *Pain Physician* journal, Bioethics Editor for the *American Journal of Pain Management*, and Ethics Section Editor for the journal *Practical Pain Management*.



Alpha-Stim CES engages the serotonergic (5-HT) raphe nuclei of the brainstem. 5-HT inhibits brainstem cholinergic (ACh) and noradrenergic (NE) systems that project supratentorially. This suppresses thalamo-cortical activity, arousal, agitation, alters sensory processing and induces EEG alpha rhythm. As well, 5-HT can act directly to modulate pain sensation in the dorsal horn of the spinal cord, and alter pain perception, cognition and emotionality within the limbic forebrain.

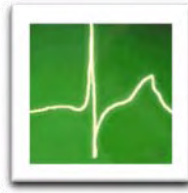
**Legend:** Blue arrows: inhibitory interactions  
Purple arrows: excitatory interactions  
X : suppressed pathways/interactions

**Abbreviations:** ACh: acetylcholine; LDT: laterodorsal tegmental nucleus of the brainstem; PPN: pediculo-ponitne nucleus of the brainstem; NE: norepinephrine; LC: locus ceruleus, 5-HT: serotonin

Note: Diagram not to scale

# Moeller Medical, LLC.

979 Parkside Place Suite 7  
Cincinnati, OH 45202-1552 USA  
(513) 297-4975 Fax: (866) 278-2664



[www.depressiontreatmentnow.com](http://www.depressiontreatmentnow.com)

email: [support@moellermedical.net](mailto:support@moellermedical.net)

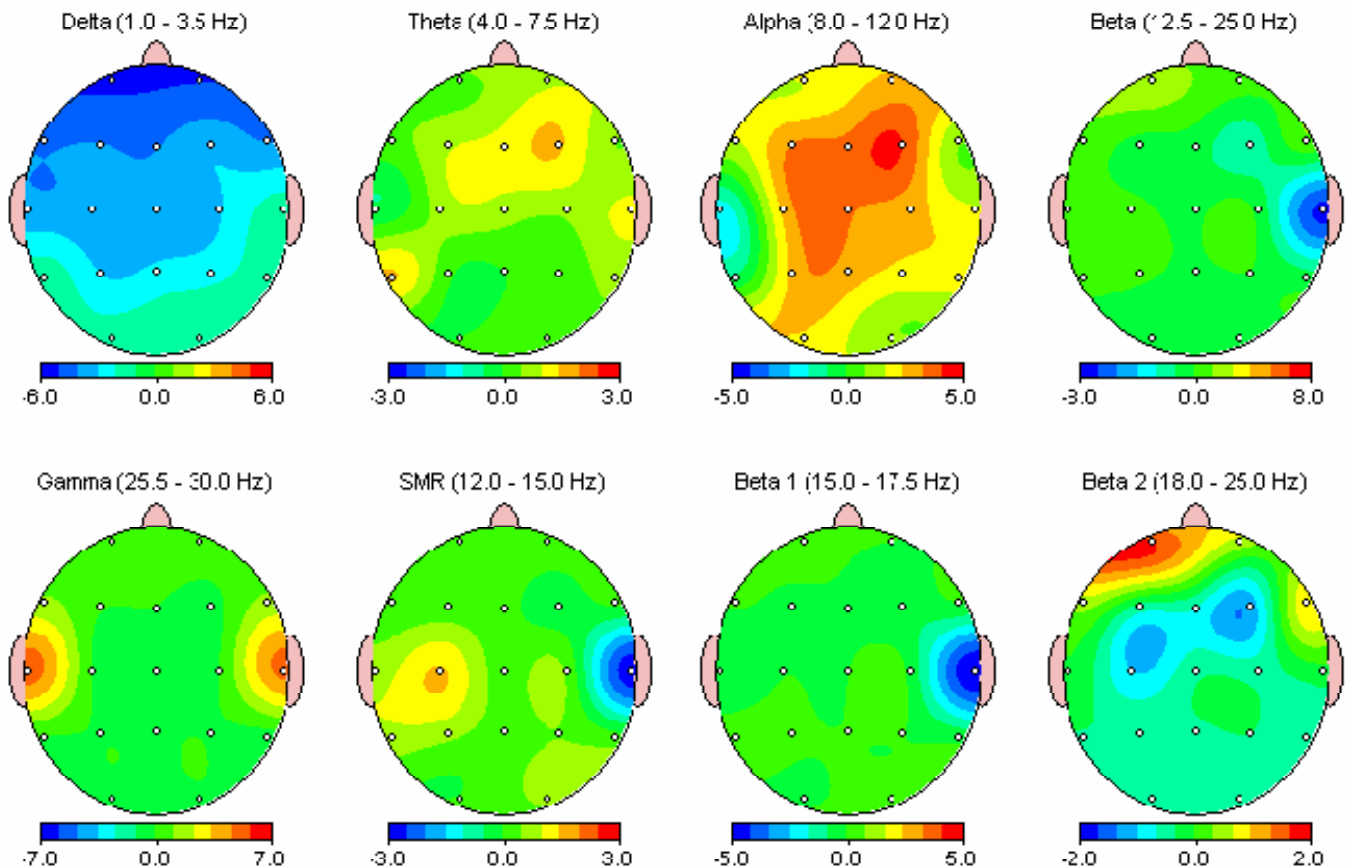
1-888-E-STIMULATE (378-4685)

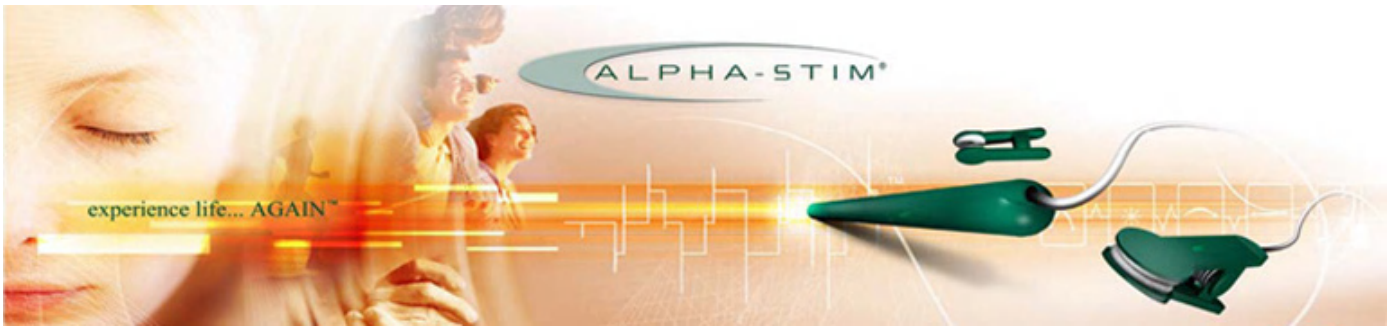
Toll-Free For USA and CANADA

This is a quantitative EEG brain map (QEEG) showing the changes in brain activity by traditional EEG bands of 30 volunteers after a 20 minute treatment with Alpha-Stim® CES at 0.5Hz. **Blue shows a decrease in activity** after Alpha-Stim® while **red shows an increase in activity**. There is an increase in alpha activity (relaxation brain waves) with a simultaneous decrease in delta activity (sleep brain waves) after using Alpha-Stim® for 20 minutes. The changes near the ears were found on raw EEG to be artifact.

Kennerly, R., QEEG analysis of cranial electrotherapy: A pilot study.  
*Journal of Neurotherapy*, 8(2):112-113, 2004

## FFT Relative Power Difference (%)





## Alpha-Stim SCS Prescribing Information

**CE conformity statement for Europe:** The Alpha-Stim SCS is a Class IIa, Type B medical device. It has been independently tested by outside agencies in order to provide assurance of conformity to applicable standards for medical equipment safety and electromagnetic compliance.

**Caution statement for United States:** Federal law (USA only) restricts this device to sale by, or on the order of, a licensed health care practitioner. Outside the USA it is available worldwide without a prescription but consultation with a qualified health care professional is recommended for difficult and unresponsive problems or when used with pharmaceuticals or other therapeutic intervention.

**Indications:** Alpha-Stim cranial electrotherapy stimulation (CES) technology is continuously being subjected to rigorous study and evaluation by the international medical community. Findings to date indicate that the Alpha-Stim SCS is an effective treatment with broad applications for a variety of anxiety disorders, or for the short term relief of the symptoms of anxiety, depression and/or insomnia. In many cases it is the sole therapeutic method required. As with any therapeutic intervention, not all people will respond to the Alpha-Stim SCS. The degree of efficacy will vary with the nature of the problem being treated and the overall health of the person.

**Contraindications:** Alpha-Stim SCS may affect the operation of cardiac pacemakers (particularly demand type pacemakers).

**Precautions:** For external use only. Do not allow children to use or handle this device without adult supervision. Do not operate potentially dangerous machinery or vehicles during, and in some cases, for several hours after treatment. Safety of stimulation has not been established during pregnancy. There have been isolated reports of blood pressure being lowered by CES so care should be taken while using the Alpha-Stim SCS with high blood pressure medication.

**Adverse effects:** Adverse effects are usually mild and self-limiting. Adverse effects seen in approximately 4,541 patients in controlled, open, uncontrolled conditions, and by physician survey and reasonably associated with the use of CES are dizziness (6 cases, 0.13%), skin irritation/electrode burns (5 cases, 0.11%), and headaches (9 cases, 0.20%). Prolonged CES treatment at higher than necessary currents may cause dizziness or nausea that can last for hours to days. Treatment immediately prior to going to sleep may cause difficulty sleeping due to increased alertness. It is recommended that CES be used at least 3 hours before going to sleep. Paradoxical reactions such as hyperexcited states, increased anxiety, and sleep disturbances may occur. If the Alpha-Stim SCS does not control your anxiety, depression and/or insomnia within 3 weeks, discontinue use and consult your physician.



### Technical details

**Power Source**  
one 9-volt battery (included)

**Current**  
10 to 500  $\mu$ A continuously adjustable

**Frequency**  
0.5 Hz (pulses per second)

**Waveform**  
bipolar asymmetrical rectangular waves, 50% duty cycle, 0 net current

**Mechanical**  
height: 10 cm, width: 7.5 cm, depth: 2.3 cm, weight: 106 gm with battery

Alpha-Stim® Patented Waveform

